

HB3000FaPo



Do you need large lifting heights?

Industrial crane with parallel chassis for moving pallets.

At a glance

LIFTING	
manual	✓
Compact hydraulic system	✗
Hydrobull pump	✓
electric	✗


DRIVING	
manual	✓
Steering handle	✗
FaPo	✓
electric	✗

OPERATING FREQUENCY	
up to 10 times per month	✗
up to 25 times per month	✗
up to 100 times per month	✓
more than 100 times per month	✗

LIFTING CAPACITY WITH HORIZONTAL JIB		
	max. 3000 kg inside the chassis	✓
	200 kg at 1635 mm in front of the wheels	✓

Link to www.hydrobull.de

Here, you can find more information incl. videos, photos etc.



These original Hydrobull cranes in industrial design have a parallel chassis and can therefore move loads. With 13 jib positions, they offer exceptionally long outreach and lifting capacity. With this special shape, the high load capacities are held within the chassis - smaller loads can even be carried in front of the wheels. No other crane can match the enormous outreach capacity and lift height. That is why they are often used for maintenance work under ceilings or above machinery. The industrial crane was designed to provide a long service life even with frequent use. Even today, we are still being asked to supply spare parts for equipment that was supplied 30–40 years ago.

✦ LIFTING



Secured to high-quality galvanised DIN-standard swivel hook with a **Hydrobull® precision pump with 4 power/lift settings**. More pumping power results in greater lift height. With smaller lifting distances and reduced effort, you can also lift heavy weights manually. The pump lever is horizontal, so that the force is transferred directly to the pump. Force is applied to the lever from above and a clip-on extension piece is supplied to achieve even greater leverage. The extension piece can be stored on the machine when not in use. Your safety is of course ensured. The power unit is equipped with an automatically closing retaining spring. If you release the T-handle, it closes automatically and prevents dangerous uncontrolled lowering of the jib arm. The maximum position is protected against overloading.

✦ LOWERING

Lowering is done via the T-handle; depending on the adjustment of the opening, the load is lowered millimetre by millimetre, either proportionally faster or slower. The load can be stopped at any point.

✦ JIB

Has 13 setting which can be easily selected via 2two separate galvanized jibs using a socket pin system.

In addition, the jibs are secured with a squeeze-out lock to prevent accidents due to unintentional falling out.

✦ Driving



Manually supported by the Hydrobull mechanical **driving positioning device, FaPo®** for short. A single person can easily manoeuvre and operate the machine **with** or without a load. The steering handle has a turning angle of almost 180 degrees which allows the crane to be turned almost on its front wheels, resulting in a small turning circle.

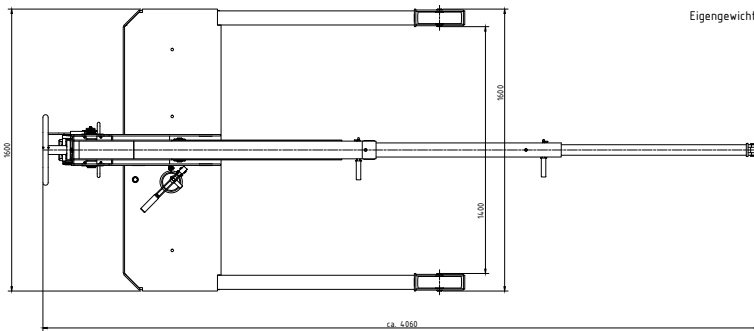
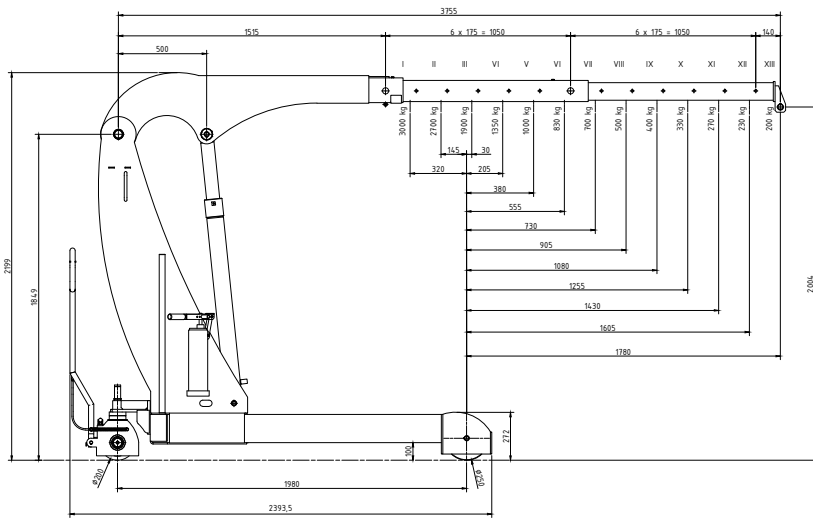
✦ PARKING

Is done easily and conveniently by turning a lever mounted on the guard of the FaPo steering wheel. **Manual machines are generally** not equipped with a travel brake.

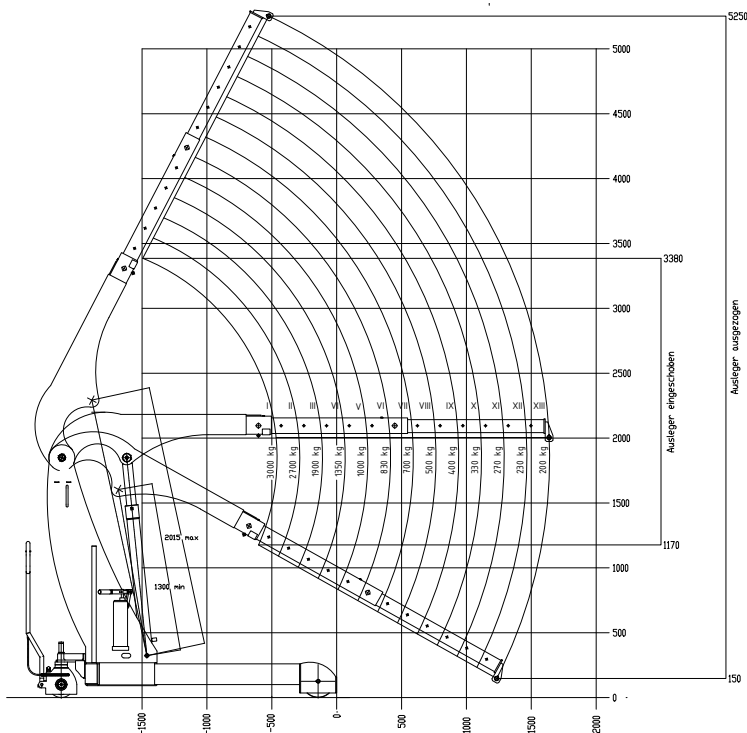
✦ OTHER

- Seal kits and other spare parts are available ex stock for both the cylinder and the pump
- Foot protection on all wheels
- Modern, protected design – only from Hydrobull
- Delivered ready for use, including inspection log book and operating instructions
- German Product
- Produced on the basis of EC Machinery Directive 2006/42/EC
- UVV Check according to DGUV68
- **2 Year Warranty**

Technical Drawings



Eigengewicht des Krans : 910 kg



Subject to technical modifications. Data subject to manufacturing tolerances.

Technical specifications

RATIO LIFTING CAPACITY, OUTREACH, LIFTING HEIGHT

Jib Position	Lifting capacity/kg	Load with horizontal jib/mm		Lift height*/mm	
		in front of the hydraulic system approx.	in front of the wheels approx.	min.	max.
1	3000	1100	0	865	3050
2	2700	1275	0	805	3200
3	1900	1450	0	745	3350
4	1350	1625	70	685	3505
5	1000	1800	245	615	3660
6	830	1975	420	545	3815
7	700	2150	595	470	3975
8	500	2325	760	400	4135
9	400	2500	935	330	4295
10	330	2675	1110	270	4450
11	270	2850	1285	210	4605
12	230	3025	1460	150	4755
13	200	3200	1635	0	4905

* at hook mouth opening - please refer to the diagram for the reduced outreach

OTHER DETAILS

		min.	max.
Jib length from... to...		1650	3750
Length of wheelbase	mm	1600	
Length of chassis incl. wheels	mm	2270	
Length incl. inserted lowered jib Pos. 1	mm	2270	
approx. aisle width for 90° turn	mm	2900	
Width of chassis external	mm	1600	
Width of chassis internal	mm	1400	
Clearance height, jib horizontal	mm	2200	
Clearance height, jib lowered	mm	2070	
Clearance	mm	275	
Hook length approx.	mm	380	
Ground clearance	mm	30	
Load wheel	mm	250	
Steering wheel	mm	200	
Slewing		-	
Tare weight - for counterweight cranes incl. empty box	kg	900	
Required filling weight for counterweight cranes**	kg	-	
Batteries			-

** Machine can only be used when installed



Not the right machine? No problem!

Fill out our form on www.hydrobull.de and we will happily produce a custom transport solution for you.