

HB1000GSFaPo



Do you work in narrow spaces?

With our slewing cranes, you can pick up loads even next to the crane!

At a glance

| LIFTING | |
|--------------------------|---|
| manual | ✓ |
| Compact hydraulic system | ✗ |
| Hydrobull pump | ✓ |
| electric | ✗ |


| DRIVING | |
|-----------------|---|
| manual | ✓ |
| Steering handle | ✗ |
| FaPo | ✓ |
| electric | ✗ |

| OPERATING FREQUENCY | |
|-------------------------------|---|
| up to 10 times per month | ✗ |
| up to 25 times per month | ✗ |
| up to 100 times per month | ✓ |
| more than 100 times per month | ✗ |

| LIFTING CAPACITY WITH HORIZONTAL JIB | | |
|---|--|---|
|  | max. 1000 kg | ✓ |
| | 295 kg at 3005 mm in front of the wheels | ✓ |

Link to www.hydrobull.de

Here, you can find more information incl. videos, photos etc.



These original Hydrobull cranes with slewing function are counterweight cranes with a jib which can be manually slewed right and left. This is particularly advantageous in narrow aisles where the load to be lifted is to the right or left of the aisle and the aisle is too narrow for the complete crane to make a 90 degree turn. The **slewing counterweight** allows it to directly approach loads and machines. All 13 positions are in FRONT of the wheels and, when slewed, laterally in front of the chassis, so that the crane has an extremely clear outreach. The clear outreach and the large lifting height allow the cranes to be used frequently for tool changes and maintenance work (also above machine installations or under the ceiling). The slewing crane was designed to provide a long service life even with frequent use.

👉 LIFTING/LOWERING



Secured to a high-quality galvanised DIN-standard swivel hook with the original **Hydrobull pump with 4 power/lift settings**. The detailed description can be found in our Technical Information Sheet 1.

👉 Driving



Manually supported by the Hydrobull mechanical **driving positioning device, FaPo®** for short. The detailed description can be found in our Technical Information Sheet 1.

👉 SLEWING

The jib can be manually slewed through 360°. After releasing the locking device on the crane, the column can be slewed through 270°. For support, the pump lever extension can be attached to a pin on the column. After releasing a further safety device, it is also possible to slew to the remaining area using mechanical driving positioning device to obtain the full 360°. The special feature of the Hydrobull slewing cranes is that **no supports** are required. **The crane is always mobile and ready for use – even under load.**

👉 JIB

Has 13 setting which can be easily selected via 2two separate galvanised jibs using a socket pin system. In addition, the jibs are secured with a squeeze-out lock to prevent accidents due to unintentional falling out. A mechanical telescopic jib which is adjustable under load is also available for an extra charge.

👉 PARKING

Is done easily and conveniently by turning a lever mounted on the guard of the FaPo steering wheel. **Manual machines are generally** not equipped with a travel brake.

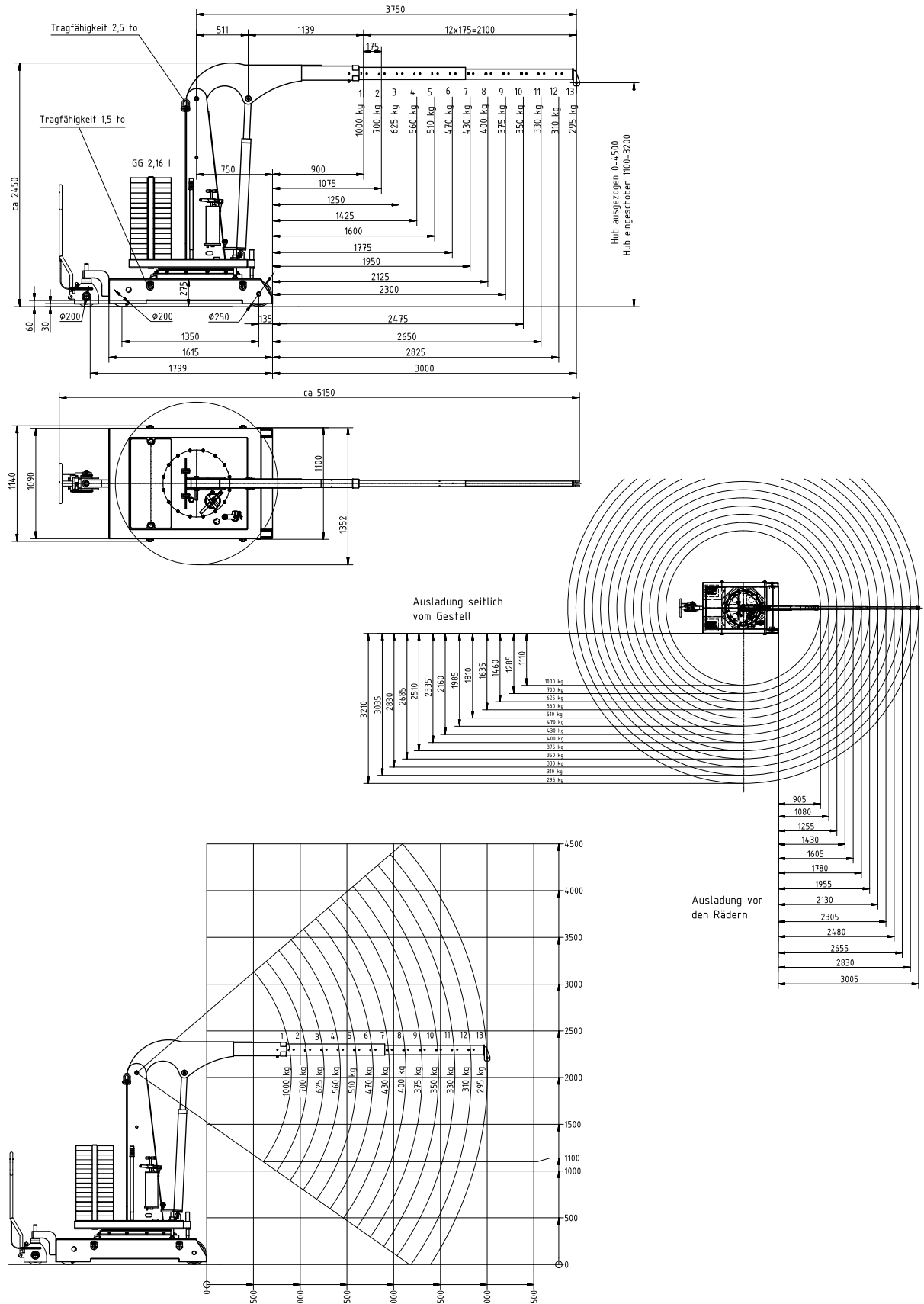
👉 COUNTERWEIGHT

The crane requires a counterweight, which is supplied separately in the form of individual solid steel plates. These plates must be placed at the end of the chassis in the area intended for the purpose between the support poles. Depending on the version, this can be done by means of a magnetic lifter or with the aid of the enclosed eyebolts.

👉 OTHER

- Seal kits and other spare parts are available ex stock for both the cylinder and the pump
- Modern, protected design – only from Hydrobull
- Delivery incl. inspection book and operating instructions
- German Product
- Euronorm 2006/42/EC and DGUV68
- **2 Year Warranty**
- Spare parts for older machines on request

Technical Drawings



Subject to technical modifications. Data subject to manufacturing tolerances.

Technical specifications

RATIO LIFTING CAPACITY, OUTREACH, LIFTING HEIGHT

| Jib Position | Lifting capacity/kg | Load with horizontal jib/mm | | Lift height*/mm | |
|--------------|---------------------|--|--------------------------------|-----------------|------|
| | | in front of the hydraulic system approx. | in front of the wheels approx. | min. | max. |
| 1 | 1000 | 1005 | 905 | 1440 | 3280 |
| 2 | 700 | 1180 | 1080 | 1360 | 3390 |
| 3 | 625 | 1355 | 1255 | 1280 | 3500 |
| 4 | 560 | 1530 | 1430 | 1200 | 3615 |
| 5 | 510 | 1705 | 1605 | 1120 | 3735 |
| 6 | 470 | 1880 | 1780 | 1035 | 3860 |
| 7 | 430 | 2055 | 1955 | 950 | 3985 |
| 8 | 400 | 2230 | 2130 | 865 | 4110 |
| 9 | 375 | 2405 | 2305 | 780 | 4235 |
| 10 | 350 | 2580 | 2480 | 700 | 4355 |
| 11 | 330 | 2755 | 2655 | 620 | 4470 |
| 12 | 310 | 2830 | 2830 | 540 | 4580 |
| 13 | 295 | 3105 | 3005 | 460 | 4690 |

* at hook mouth opening - please refer to the diagram for the reduced outreach

OTHER DETAILS

| | | min. | max. |
|--|----|------|------|
| Jib length from... to... | | 2100 | 3750 |
| Length of wheelbase | mm | | 1870 |
| Length of chassis incl. wheels | mm | | 2100 |
| Length incl. inserted lowered jib Pos. 1 | mm | | 2950 |
| approx. aisle width for 90° turn | mm | | - |
| Width of chassis external | mm | | 1090 |
| Width of chassis internal | mm | | - |
| Clearance height, jib horizontal | mm | | 2420 |
| Clearance height, jib lowered | mm | | 2250 |
| Clearance | mm | | - |
| Hook length approx. | mm | | 330 |
| Ground clearance | mm | | 30 |
| Load wheel | mm | | 250 |
| Steering wheel | mm | | 250 |
| Slewing | ° | | 360° |
| Tare weight - for counterweight cranes incl. empty box | kg | | 1000 |
| Required filling weight for counterweight cranes** | kg | | 2160 |
| Batteries | | | - |
| Charger - inbuilt - external | | | - |

** Machine can only be used when installed



Not the right machine? No problem!

Fill out our form on www.hydrobull.de and we will happily produce a custom transport solution for you.