

# HB1000FaPo



**Do you need large lifting heights?**


Industrial crane with parallel chassis for moving pallets.

## At a glance

LIFTING	
manual	✓
Compact hydraulic system	✗
Hydrobull pump	✓
electric	✗


DRIVING	
manual	✓
Steering handle	✗
FaPo	✓
electric	✗

OPERATING FREQUENCY	
up to 10 times per month	✗
up to 25 times per month	✗
up to 100 times per month	✓
more than 100 times per month	✗

LIFTING CAPACITY WITH HORIZONTAL JIB		
	max. 1000 kg inside the chassis	✓
	90 kg at 1480 mm in front of the wheels	✓

Link to [www.hydrobull.de](http://www.hydrobull.de)

Here, you can find more information incl. videos, photos etc.



These original Hydrobull cranes in industrial design have a parallel chassis and can therefore move loads. With 13 jib positions, they offer exceptionally long outreach and lifting capacity. With this special shape, the high load capacities are held within the chassis - smaller loads can even be carried in front of the wheels. No other crane can match the enormous outreach capacity and lift height. That is why they are often used for maintenance work under ceilings or above machinery. The industrial crane was designed to provide a long service life even with frequent use. Even today, we are still being asked to supply spare parts for equipment that was supplied 30–40 years ago.

### 🔸 LIFTING



Secured to high-quality galvanised DIN-standard swivel hook with a **Hydrobull® precision pump with 4 power/lift settings**. More pumping power results in greater lift height. With smaller lifting distances and reduced effort, you can also lift heavy weights manually. The pump lever is horizontal, so that the force is transferred directly to the pump. Force is applied to the lever from above and a clip-on extension piece is supplied to achieve even greater leverage. The extension piece can be stored on the machine when not in use. Your safety is of course ensured. The power unit is equipped with an automatically closing retaining spring. If you release the T-handle, it closes automatically and prevents dangerous uncontrolled lowering of the jib arm. The maximum position is protected against overloading.

### 🔸 LOWERING

Lowering is done via the T-handle; depending on the adjustment of the opening, the load is lowered millimetre by millimetre, either proportionally faster or slower. The load can be stopped at any point.

### 🔸 JIB

Has 13 setting which can be easily selected via 2 two separate galvanized jibs using a socket pin system.

In addition, the jibs are secured with a squeeze-out lock to prevent accidents due to unintentional falling out.

### 🔸 Driving



Manually supported by the Hydrobull mechanical **driving positioning device, FaPo®** for short. A single person can easily manoeuvre and operate the machine **with** or without a load. The steering handle has a turning angle of almost 180 degrees which allows the crane to be turned almost on its front wheels, resulting in a small turning circle.

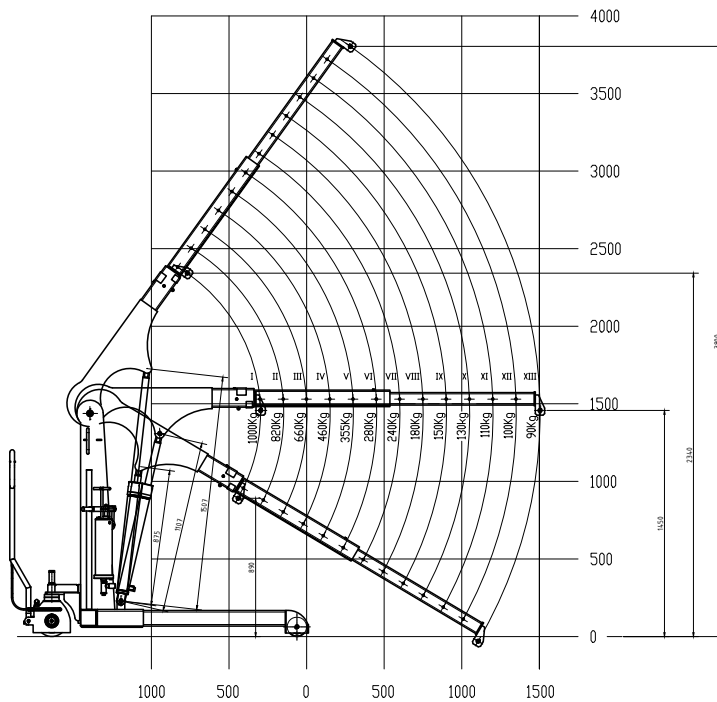
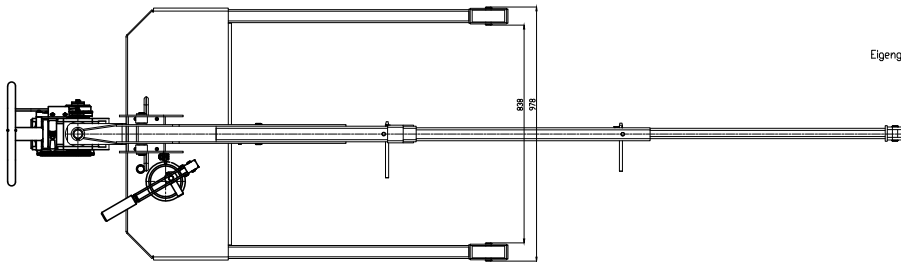
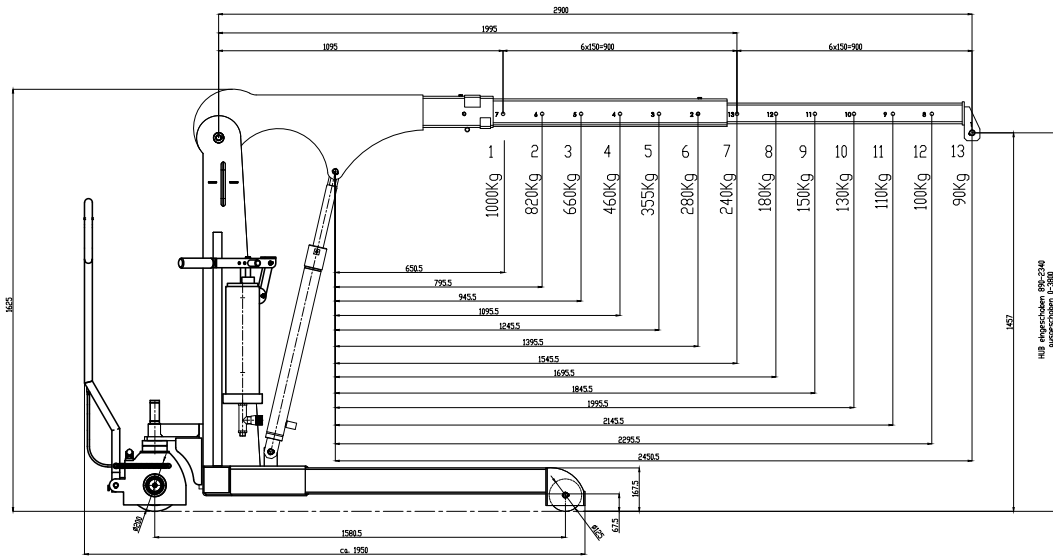
### 🔸 PARKING

Is done easily and conveniently by turning a lever mounted on the guard of the FaPo steering wheel. **Manual machines are generally** not equipped with a travel brake.

### 🔸 OTHER

- Seal kits and other spare parts are available ex stock for both the cylinder and the pump
- Foot protection on all wheels
- Modern, protected design – only from Hydrobull
- Delivered ready for use, including inspection log book and operating instructions
- German Product
- Produced on the basis of EC Machinery Directive 2006/42/EC
- UVV Check according to DGUV68
- **2 Year Warranty**

## Technical Drawings



Subject to technical modifications. Data subject to manufacturing tolerances.

## Technical specifications

### RATIO LIFTING CAPACITY, OUTREACH, LIFTING HEIGHT

Jib Position	Lifting capacity/kg	Load with horizontal jib/mm		Lift height*/mm	
		in front of the hydraulic system approx.	in front of the wheels approx.	min.	max.
1	1000	650	–	690	2130
2	820	795	–	615	2250
3	660	945	–	540	2370
4	460	1095	60	465	2490
5	355	1245	280	390	2610
6	280	1395	430	310	2730
7	240	1545	580	230	2860
8	180	1695	730	150	2990
9	150	1845	880	70	3110
10	130	1995	1030	0	3230
11	110	2145	1180	0	3350
12	100	2295	1330	0	3470
13	90	2450	1480	0	3590

\* at hook mouth opening - please refer to the diagram for the reduced outreach

### OTHER DETAILS

		min.	max.
Jib length from... to...		1095	2900
Length of wheelbase	mm	1580	
Length of chassis incl. wheels	mm	1950	
Length incl. inserted lowered jib Pos. 1	mm	1950	
approx. aisle width for 90° turn	mm	2230	
Width of chassis external	mm	980	
Width of chassis internal	mm	835	
Clearance height, jib horizontal	mm	1620	
Clearance height, jib lowered	mm	1600	
Clearance	mm	170	
Hook length approx.	mm	265	
Ground clearance	mm	30	
Load wheel	mm	125	
Steering wheel	mm	200	
Slewing		–	
Tare weight - for counterweight cranes incl. empty box	kg	440	
Required filling weight for counterweight cranes**	kg	–	
Batteries			–

\*\* Machine can only be used when installed



**Not the right machine? No problem!**

Fill out our form on [www.hydrobull.de](http://www.hydrobull.de) and we will happily produce a custom transport solution for you.