

ASSEMBLY CRANE

with counterweight



7-500GK



Are you looking for a simple, good value assembly crane with counterweight?

This assembly crane boasts excellent value for money!

At a glance

LIFTING	
manual	✓
Compact hydraulic system	✗
Hydrobull pump	✗
electric	✗

DRIVING	
manual	✓
Steering handle	✓
FaPo	✗
electric	✗

OPERATING FREQUENCY	
up to 10 times per month	✗
up to 25 times per month	✓
up to 100 times per month	✗
more than 100 times per month	✗

LIFTING CAPACITY WITH HORIZONTAL JIB		
	max. 500 kg	✓
	250 kg at 1730 mm in front of the wheels	✓

Link to www.hydrobull.de

Here, you can find more information incl. videos, photos etc.



These low-cost assembly cranes with a simple design and permanently welded counterweight box can directly approach loads as the chassis is shifted to the rear. They are designed for occasional use.

🔸 LIFTING

Via a single-acting hydraulic pump with vertical hand lever.

🔸 LOWERING

Via a finely adjustable drain valve, which must be closed to end the lowering process.

🔸 DRIVING

Manually by pulling and pushing on a steering handle. The steering handle can be fixed vertically for idle periods.

🔸 JIB

Has seven settings, which can be easily selected via the painted telescopic jib using a socket pin system.

🔸 PARKING

With locking device on the steering wheel

🔸 COUNTERWEIGHT

ATTENTION!

Only use with filled box!

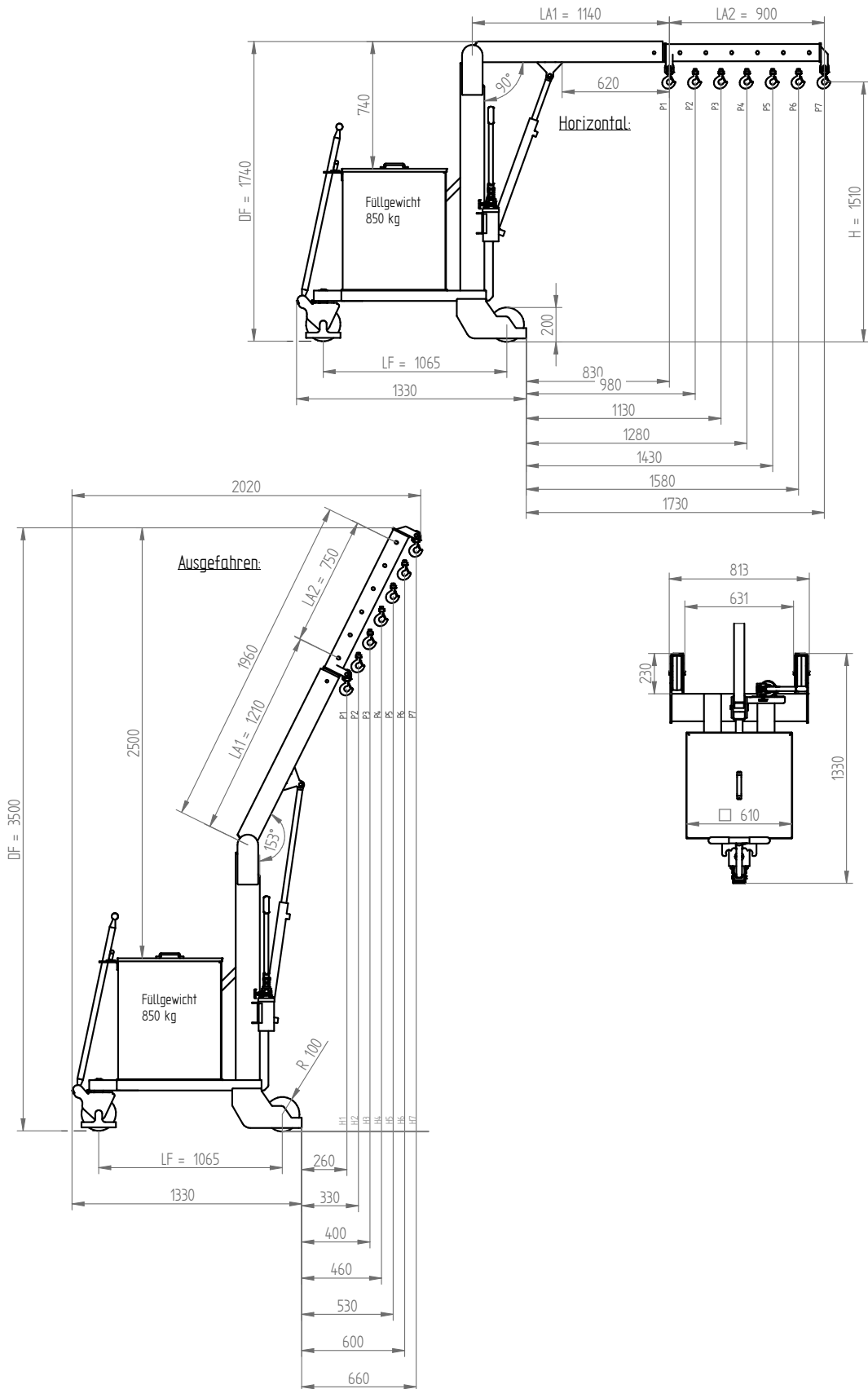
You can fill the box with steel plates yourself or we can do it for you. The counterweight block is delivered separately and must be lifted into the counterweight box on the crane with suitable lifting gear.

🔸 OTHER

- Tested by us and recommended for occasional use (SF recommended)
- Delivery incl. CE declaration and according to UVV and BGV-BGR 500
- **2 Year Warranty**

The crane is designed to move under load. We recommend our Hydrobull industrial cranes for longer journeys – especially with a load or regular work, or for several lifting operations in succession.

Technical Drawings



Subject to technical modifications. Data subject to manufacturing tolerances.

Technical specifications

RATIO LIFTING CAPACITY, OUTREACH, LIFTING HEIGHT

Jib	Lifting capacity/kg	Load with horizontal jib/mm		Lift height*/mm	
		in front of the hydraulic system approx.	in front of the wheels approx.	min.	max.
1	500	620	830	970	2570
2	450	770	980	895	2700
3	370	920	1130	820	2840
4	330	1070	1280	745	2970
5	300	1220	1430	670	3100
6	275	1370	1580	595	3240
7	250	1520	1730	520	3370

* at hook mouth opening - please refer to the diagram for the reduced outreach

OTHER DETAILS

		min.	max.
Horizontal jib length from... to...	mm	1140	2040
Wheel distance	mm		1065
Width of chassis external	mm		800
Width of chassis internal	mm		650
Clearance height, jib horizontal	mm		1740
Lift height	mm	970	2400
Hook length	mm		120
Wheel diameter	mm		200
Clearance	mm		240
Ground clearance	mm		20
Crane tare weight	kg		250
required counterweight	kg		850

** Machine can only be used when installed



Not the right machine? No problem!

Fill out our form on www.hydrobull.de and we will happily produce a custom transport solution for you.